



Exploring Ireland's Health Care Services

June 28 to July 12, 2015

This study abroad program is coordinated by the Northern Illinois University Study Abroad Office (SAO), in cooperation with the NIU College of Health and Human Sciences and Department of Nursing and Health Studies.

PROGRAM DATES: The program will officially begin with a pre-program class in DeKalb Illinois on a date to be determined. Students will arrive Sunday June 28, 2015 in Dublin and will depart on Sunday July 12, 2015. Students will be responsible for making their own air travel arrangements in order to arrive in Dublin on Sunday June 28, 2015. A post-program class will occur in DeKalb, Illinois on a second date to be determined.

PROGRAM DIRECTORS: Jeanette Rossetti, Associate Professor and Kathleen Musker Associate Professor in Nursing and Health Studies in the NIU College of Health and Human Sciences.



Jeanette Rossetti - Associate Professor of Nursing at Northern Illinois University will serve as director of the program. Professor Rossetti's specialty is psychiatric and mental health nursing. She received her Master's in Nursing from St. Xavier University in Chicago, Illinois and her doctoral degree in Adult Education from Northern Illinois University. She is an avid proponent of advocacy and for upholding rights of those hospitalized with mental illness. She is a member of the Illinois Guardianship and Advocacy Commission, Human Rights Authority in the State of Illinois and a member of the American Psychiatric Nurses Association and

Sigma Theta Tau International. In 2009 she was one of the recipients of the Excellence in Undergraduate Teaching Award for Northern Illinois University

Kathleen Musker Associate Professor of Nursing at Northern Illinois University will serve as co-director of the program. Professor Musker has extensive clinical experience in psychiatric and community health nursing and teaches courses in both areas. She also has a private practice in holistic health counseling. Doctor Musker received an MA in holistic health counseling from John F. Kennedy University in California, and received her PhD in nursing from Loyola University, Chicago. She is a member of the American Psychiatric Nurses Association, the American Holistic Nurses Association, and Sigma Theta Tau International.

Professor Musker's research and other interests include holistic pattern recognition, cultural aspects of psychiatric nursing, and rights of the mentally ill.





PROGRAM OVERVIEW/OBJECTIVES: The primary purpose of this program is to provide participants with the opportunity to explore a variety of healthcare services in Ireland. During this program students will learn about the history of Ireland's health care system and the variety of Ireland's health services. This will include specialties of

nursing, public health, and health studies. Students in the College of Health and Human Services and beyond will find the focus of health care services applicable to their academic interests, as well. With a student centered learning approach the co-directors of the program will gear assignments and learning activities to the specialty interests of the program's enrolled students. In addition, students will be exposed to the cultural opportunities that the beautiful country of Ireland has to offer.



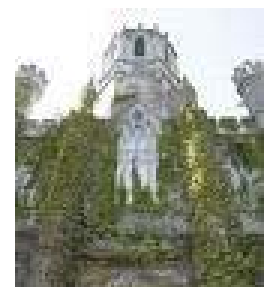
PROGRAM SITE(S): The program will take place in Ireland, specifically the cities of Dublin and Galway. Ireland is the westernmost and second largest of the British Isles and is separated from Great Britain by Saint George's Channel on the southeast, the Irish Sea on the east, and the North Channel on the northeast. Politically, the island is divided into Northern Ireland, a constituent part of the United Kingdom (U.K.), and the Republic of Ireland. The island is divided into four historical provinces—Connaught, Leinster, Munster, and Ulster—and administrative units called counties.



Trinity College

While in Dublin students will be staying at Trinity College and while in Galway students will be staying at the National University of Ireland, Galway. Many guest speakers and site visits will occur at these two historical academic institutions.

IRELAND'S HEALTH CARE SYSTEM: Ireland's public health care system is governed by the Health Act of 2004. This act established a new body to be responsible for providing health and personal social services to everyone living in Ireland. The new national health service became official on January 1, 2005, but is currently being reformed. In addition to the public-sector, there is also a large private healthcare market in Ireland.



National University of Ireland, Galway

All residents of Ireland are entitled to receive health care through the public health care system, which is managed by the Health Service Executive and funded by general taxation. A person may be required to pay a subsidized fee for certain health care received, but this amount depends on income, age, illness or disability. All child health and maternity services are provided free of charge as is emergency care.

Everyone living in Ireland, including visitors who hold a European Health Card, is entitled to free maintenance and treatment in public beds and voluntary hospitals. Outpatient services are also provided for free. However some people, mostly high-income earners, may have to pay subsidized hospital charges.

Because access to care is granted to all, Ireland's overall satisfaction is in constant battle. Waiting times in Ireland are some the longest in Europe and although Ireland encourages seeing specialists, patience is more so becoming the determining factor when receiving care.

Unlike some other countries', Ireland efficiently allocates government funding, which leads Ireland to see an overall healthier country, low infant mortality rates and only 14.8% of residents in Ireland requiring long term care.

Although there are problems with all countries' health care systems, Ireland does an effective job of procuring a healthy country where all are covered and can receive care when need be.

HIGHLIGHTS: There are several exciting highlights being offered to the students during this study abroad program which may include:

- Tours and guest lectures by expert faculty from Trinity College, and the National University of Ireland, Galway.
- Tour of the National University of Ireland, Galway's state of the art Simulation lab.
- Tours and guest speakers from St. Patrick's Hospital, the University Hospital, and Phoenix Care Hospital
- Day tours of Dublin, Galway, Aran Islands, Cliff's of Moher and/or Kylemore Abbey.
- Attending a theatrical production such as Riverdance

PROGRAM AUDIENCE: This program is open to NIU and non-NIU students, undergraduate and graduate students, and students in Nursing and Health Studies as well as students from various other majors. This program may also be of special interest to students majoring in Psychology, Law, Sociology and various other social or health studies. Space is limited and qualified applicants will be accepted on a first-come-first-serve basis.

INSTRUCTION METHOD: This course will include one pre-travel class, two weeks in Ireland, and one post-travel class. Pre- and post-travel classes will be held at the School of Nursing building and will last 2 hours each.

During the pre and post travel class NIU faculty member Professors Rossetti and Musker will provide instruction. A variety of teaching methods will be utilized including lecture, discussion, video presentations, and student presentations.

While in Ireland, instruction will be provided by Professor's Rossetti and Musker and by faculty from Trinity College and the National University of Ireland, Galway. In addition, a variety of health care experts will offer presentations and topic related tours. Daily post conferences, while in Ireland, will also be held to provide students with time for questions/answers, reflection, and discussion of learning.

Students will have written assignments which will include daily journaling and a formal project to be presented during the post travel class. Graduate students assignments will reflect an increase in expectations and rigor. All students will be expected to complete assignments and attend the pre/post classes and the required course meeting times and events while in Ireland.

PROGRAM ACADEMIC CREDIT: For satisfactory participation in the program, participants will receive 3 semester hours of undergraduate or graduate credit in one of the following NIU courses.

UNDERGRADUATE CREDIT:	
INTL 301: Study Abroad Programs*	3 semester hours
Description: Course work undertaken as part of an approved university study abroad program. May be counted toward the satisfaction of general education requirements if approved as the equivalent of an authorized general education course.	

GRADUATE CREDIT:	
IDSP 501: Study Abroad Programs*	3 semester hours
Description: Course work undertaken as part of an approved university study abroad program. May be repeated to a maximum of 9 semester hours.	

HONORS CREDIT: Qualified students may also elect to receive Honors credit for any study abroad course(s) with the approval of the NIU faculty or instructor responsible for the course. For more information please contact the University Honors Office.

APPLICATION AND ADMISSION PROCEDURES: The program is open to Nursing and Health Studies (NUHS) undergraduate and graduate students, NIU students from other majors, and non-NIU students (with priority given to NUHS students) who meet the NIU general admission requirements, and who are interested in mental health and psychiatric services of Ireland. Currently enrolled students must meet College of Health and Human Sciences course GPA requirements. Graduate level students must also meet NIU Graduate School admission, course and GPA requirements.

Students must be in good academic and disciplinary standing at the time of application. Students who are on academic or disciplinary probation are not eligible to participate in study abroad programs. **Applicants must participate in the *entire* program and satisfy NIU undergraduate or graduate admission and course requirements.**

Students cannot have any encumbrances against their NIU records. Any encumbrances placed on a student's records by NIU (i.e., the Graduate School, Undergraduate Admissions, Bursar's Office, Accounts Receivable, Registration and Records, Health Services, Parking Services, etc.) must be cleared before a student is granted admission to a study abroad program.

For undergraduate students to be admitted to the program, an applicant's official transcript must be on file in the NIU Study Abroad Office. Students who are currently enrolled at NIU, or who have previously enrolled at NIU, do not need to request an official transcript; the Study Abroad Office will make this request on behalf of the applicant. Students who want to participate in the program and earn academic credit from NIU who have **not** previously enrolled at NIU, or who are not **currently** enrolled at NIU, should ask the Registrar at their institution to forward an official transcript as soon as possible to the Study Abroad Office. (Student-issued transcripts and photocopies are not acceptable.) Questions relating to the admission requirements or transcripts should be directed to the Study Abroad Office.

Students who desire to obtain graduate credit must either be admitted to a graduate program within the NIU Graduate School, or be admitted to the status of a "student-at-large" (SAL) within NIU's Graduate School. For students to be admitted to the program for graduate credit, the applicant's official transcript must be on file in the NIU SAO. Students who are currently enrolled at NIU, or who have previously enrolled at NIU, do not need to request an official transcript. However, students who will participate in the program in order to earn academic credit as an SAL (students who have not currently enrolled, nor are previously enrolled at NIU) must provide a transcript from the baccalaureate institution and from any institution at which graduate credit has been earned. This document must be provided to the SAO before a student can be admitted as an SAL to the program. (Student issued transcripts and photocopies are not acceptable.)

APPLICATION: Click <http://niu.studioabroad.com/?go=mentalhealth> or visit the NIU Study Abroad Office website at <https://niu.studioabroad.com> (and search for "Ireland" or the *Exploring Ireland's Health Care Services* program) to begin the online application process for this program. The online process provides guidance on requesting information, advising, or applying for the program. Please note that at the time of application, applicants will be expected to submit a signature verification form and copy of their ID to the Study Abroad Office. More detailed instructions can be found on the <https://niu.studioabroad.com> website or by contacting the Study Abroad Office at (815) 753-0700 or niuabroad@niu.edu.

\$200 APPLICATION FEE/DEPOSIT: A \$200 application fee/deposit is required of all applicants. The \$200 is broken down into \$100 for the non-refundable application fee and \$100 for a program deposit. Both the application fee and the deposit will be applied to the total

balance of the program cost. The \$100 deposit is refundable only if the participant withdraws prior to the withdrawal deadline indicated on the program materials or for medical reasons verified by a physician if the withdrawal takes place after the withdrawal deadline.

The \$200 application fee/deposit will be charged to NIU students' NIU Bursar's account. (Checks and money orders cannot be accepted from NIU students.) Non-NIU students must submit a check or money order in the amount of \$200. More detailed instructions can be found on the website.

IMPORTANT – All applications will be categorized as “Pending – No Deposit” until the \$200 application fee/deposit has been received (or, in the case of non-NIU students, once a check has been received). The Study Abroad Office will not consider or process applications without the \$200 application fee/deposit. In order to reserve your place in the program you must submit the \$200 deposit within 14 days of application. After 14 days applications without a deposit will be inactivated.

ACCOMMODATIONS AND MEALS: Participants will reside in hotel and host family residences in rooms with single or twin beds and will be provided breakfast and dinner meals daily throughout the period of residency. Lunch meals will be decided on as a group.

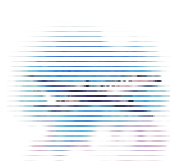
APPLICATION DEADLINES:

- Priority Deadline for NIU Nursing and Health Studies (NUHS) students: April 1, 2015
- All other NIU students and non-NIU students: April 15, 2015

Late applications are strongly discouraged will be only be considered on a case-by-case basis.

ACCOMMODATIONS AND MEALS: While in Dublin residence hall accommodations will be provided by Trinity College. Each room has two private bedrooms with twin beds and a shared bathroom and living space. While in Galway participants will stay in an area hostel or in the residence halls of the National University of Ireland and stay in a 4-6 bedroom suite with individual twin beds and a shared bathroom. Continental breakfast OR lunch will be provided daily during days with guest speakers or academic site visits. A welcome dinner at the beginning of the program and a farewell dinner at the end of the program will also be provided.

AIR TRANSPORTATION: Individuals will be responsible for making their own air travel arrangements between the U.S. and Dublin, Ireland and for purchasing their tickets from a travel agent or airline of their choice. (Travel insurance is recommended.) Participants should keep in mind that in order to arrive in Dublin in time for the official beginning of the program, they should plan to depart the U.S. no later than Saturday June 27th.



For information regarding airfares and airlines students may wish to check-out additional airfare sites on the Internet.

Important - The Study Abroad Office advises all participants that flight reservations for this program should not be booked until:

- a. After the April 1, 2015 application deadline
- AND**
- b. The SAO has accepted the minimum number of participants needed to operate this program.

This advisory is given so that participants do not find themselves financially responsible for airline tickets should it be necessary to cancel the program. (See section entitled, **CANCELLATION OF THE PROGRAM**)

LAND TRANSPORTATION: For program-related travel the group will travel by city bus, train, coach bus, taxi, DART, and Ferry.

PASSPORT: --IMPORTANT--All participants are required to **possess** a valid passport by May 1, 2015. *Important Note:* *U.S. passports must be valid SIX months beyond the intended stay overseas.* Individuals who do not currently possess a valid passport should apply for one immediately upon acceptance into the program. Passport applications can take anywhere from two to six weeks to process therefore you must not delay in applying for your passport. Information on applying for a passport as well as expediting a passport application can be found at <http://travel.state.gov/content/passports/english.html>. Foreign passport holders may need special visas for travel **and are responsible for obtaining all necessary visas.**



VISA: A visa is not required for tourist or business stays of up to three months.

INTERNATIONAL STUDENT I.D. CARD: The ISIC card is provided as part of the program cost. The I.D. card can provide discount on international airfare and other travel. Students will receive an application and instructions for obtaining this card when accepted into the program.



The International Student Identity Card also includes a limited health and accident insurance policy which is only valid outside the U.S. Students will have to pay bills at the time of treatment and will be reimbursed later.

PASSPORT AND ISIC PHOTOS: You may have your passport and/or ISIC photo(s) taken in the NIU Study Abroad Office. Photos are \$3.00 for the first photo and \$2.00 for each photo after that. After the first two photos, photos must be purchased in multiples of two. Photos are usually developed while you wait. Study Abroad Office hours are 8:00 a.m. – 12:00 p.m. (closed over the lunch hour) and 1:00 – 4:30 p.m.



NIU MAJOR MEDICAL INSURANCE: NIU Student health insurance is required for participation in an NIU study abroad program. Participants not currently enrolled in the NIU

Major Medical Insurance Plan will be enrolled by the Study Abroad Office. The NIU Major Medical Insurance Plan has a \$250 deductible clause. Students requiring medical attention will be expected to pay any related costs and then file a claim with the NIU Student Insurance Office after returning to the States. Receipts showing payment for all medical expenses are required for reimbursement.

NIU PROGRAM COST: The program cost pays for the following cost related services:

- 1) Accommodations and Continental breakfast daily OR lunch on days with guest speakers or academic site visits, along with a welcome and farewell dinner and two other dinners during the program.
- 2) Program-related land transportation
- 3) Admission fees to cultural and historical sites visited as part of the daily schedule
- 4) International Student I.D. Card
- 5) NIU tuition for undergraduate or graduate credit
- 6) NIU major medical insurance

PROGRAM COST: \$4,200

All prices quoted are subject to change. The information contained in the program documents and forms is presented in good faith and is believed to be correct as of the date presented.

Northern Illinois University reserves the right to amend, modify, revise, or delete any information appearing in these documents, including but not limited to the cost of the program.

Non-NIU students should consult with their home institutions regarding additional costs that may apply to study abroad. Non-NIU students are responsible for any study abroad charges imposed by their home institution.

ADDITIONAL COSTS TO PARTICIPANTS:

- Airfare
- Cost of acquiring a passport (approximately \$135, including 2 passport pictures).
- Passport size photos.
- Additional costs associated with obtaining a visa for non-U.S. passport holders.
- \$40 Undergraduate application fee for non-NIU undergraduate students.
- Breakfast AND/OR lunch and most dinners (see included meals).
- Independent travel and visa costs associated with independent travel.
- Expenses for free-time pursuits.
- Expenses and purchases of a personal nature.

FINANCIAL AID: As a participant in a study abroad program through NIU, applicants may be eligible for: Pell Grant, SEOG, Perkins Loan, PLUS Loan, Subsidized or Unsubsidized Stafford

Loan, MAP Award or your privately awarded scholarship with consent of awarding organization. Tuition waivers do not apply. Please contact Pamela Rosenberg, International Programs Business Manager, Williston Hall 407, (815) 753-9530, prosenberg@niu.edu for more information.

NIU UNDERGRADUATE APPLICATION FEE (Applies to Non-NIU students only):

There is a \$40 non-refundable Undergraduate Application fee for students applying to NIU for the first time. If you are currently enrolled at NIU as a degree-seeking undergraduate student, you are not required to submit this payment.

If you are applying to NIU for the first time you will be provided with a link in your acceptance packet that will guide you to the online NIU Undergraduate Application. In the online application you will be asked to pay the \$40 application fee by credit card or check.

WITHDRAWAL FROM THE PROGRAM: Applicants withdrawing from the program after TBD will not be refunded the \$200 program deposit.

Applicants withdrawing from the program after this date will also be held accountable for any funds obligated to overseas vendors and agents on the applicant's behalf. This provision is in effect even if the applicant has not submitted the \$200 deposit or additional payments, and if the applicant is applying for financial aid.

If the applicant must withdraw after TBD for medical reasons, funds obligated on their behalf to overseas vendors can only be refunded if:

- 1) The request is submitted to the Study Abroad Office in writing and accompanied by a signed statement stating that travel is not advised from a physician on the physician's letterhead; **and**
- 2) NIU is able to obtain refunds from overseas vendors and agents.

CANCELLATION OF THE PROGRAM: The Study Abroad Office reserves the right to cancel this program if the minimum required enrollment is not attained. If, prior to the commencement of the program, a U.S. State Department Travel Warning is issued for Ireland, all applicants will be notified promptly of the warning and the possibility of cancellation of the program. If, during the course of the program, a U.S. State Department Travel Warning is issued for Ireland, students will be promptly notified of the warning and the advisability of canceling the program.



Exploring Ireland's Health Care Services

Tentative Daily Schedule Summer 2015

Sunday, June 28	Arrive in Dublin Post Conference
Monday, June 29	Guest Speaker: History of Ireland City Bus Tour St. Patrick's Cathedral Visit Early Post Conference Welcome Dinner
Tuesday, June 30	Guest Speaker: Introduction to Ireland's Health Care System Day Cultural Event: Trinity University and Book of Kells Early Post Conference Literary Pub Crawl
Wednesday, July 1	Guest Seminar Early evening post Conference
Thursday, July 2	Hospital Tour Early evening post conference
Friday, July 3	Guest Seminar: Early evening post conference Evening Theatrical Production in Dublin
Saturday, July 4	Morning Conference Depart for Galway Afternoon and evening in Galway Visit to Galway Cultural Center/Quay Street and City Centre Welcome to Galway dinner

Sunday, July 5	Day trip to Aran Islands
Monday, July 6	Guest Seminar at National University of Ireland Galway (NUIG) Tour of NUIG and School of Nursing and Midwifery's Simulation Lab Trip to Lower Salt Hill Evening post conference
Tuesday, July 7	Cultural Event (Cliffs of Moher) Early evening post conference
Wednesday, July 8	University Hospital Tour Afternoon return to Galway Early evening post conference
Thursday, July 9	Phoenix Care Hospital Tour Early Evening Post Conference
Friday, July 10	Morning Guest Seminar Free afternoon for travel
Saturday, July 11	Free for travel Evening Post Conference Farewell Dinner
Sunday, July 12	Depart

The above is Tentative and the Schedule subject to change.

Please note that Post Conferences will include wrap up discussion, question and answer time, and an opportunity to reflect on the days learning opportunities.

**NORTHERN ILLINOIS UNIVERSITY RESERVES THE RIGHT TO ALTER
OR CANCEL THIS PROGRAM AS MAY BE DEEMED NECESSARY!**